

Attachment Save for Exchange
Administrator's Guide
document version 1.9

Table of contents

| | |
|---|----|
| Intro..... | 3 |
| 1. Product Overview | 4 |
| 2. Product Architecture and Basic Concepts..... | 4 |
| 3. System Requirements..... | 5 |
| 3.1. Minimum System Requirements | 5 |
| 3.2. Supported Types of Messages and Attachments..... | 6 |
| 3.3. Supported Versions of the Microsoft Exchange Server | 6 |
| 4. Product Installation and Deployment | 7 |
| 4.1. Deployment of Attachment Save for Exchange | 7 |
| 4.2. Upgrade from the Previous Version | 9 |
| 4.3. Product Uninstall | 9 |
| 4.4. Installation of the Agent on an Exchange 2003 failover cluster | 10 |
| 4.5. Manual Agent installation..... | 11 |
| 5. Initial Product Setup | 11 |
| 5.1. Creation of Rules | 11 |
| 5.2. Priority of Rules..... | 12 |
| 6. General Product Settings..... | 14 |
| 7. Licensing..... | 15 |
| 8. Diagnostics of malfunctions | 15 |
| Conclusion..... | 16 |

Intro

This manual has been produced by MAPILab company and contains necessary information for successfully installation of Attachment Save for Exchange. We ask that you read the entire contents of all the sections of this manual carefully before installing the product.

The manual contains the following chapters:

- **Chapter 1.** Provides brief description of product architecture and enables to select the appropriate type of deployment for your organization.
- **Chapter 2.** Describes system requirements of the product and allows preparing environment for product installation by installing necessary applications and components of the system.
- **Chapter 3.** Contains information you may need during the product installation and helps to deploy the product.
- **Chapter 4.** Contains the necessary information for initial configuration of the product.
- **Chapter 5.** This chapter contains descriptions of the product settings to fine tune it to the environment of your organization.
- **Chapter 6.** Describes the principles of product licensing.
- **Chapter 7.** Contains basic information for the diagnosis of malfunctions of the product.

1. Product Overview

Attachment Save for Exchange is software enabling to save email messages and attachments in automatic mode in compliance with the rules set.

The main product features:

Attachment Save for Exchange keeps track of the organization's mail traffic and saves message attachments to specified folder in compliance with the rules set.

Attachment Save for Exchange operates as service and doesn't require an open user session.

Attachment Save for Exchange gets integrated into the transport service of the Exchange servers and doesn't reduce the Exchange performance.

A flexible setup wizard of the Attachment Save for Exchange allows you to select only necessary servers where the product components will be installed.

Attachment Save for Exchange is a mass-market solution that doesn't require sophisticated installation and specialists with advanced skills. Product deployment is easy and safe. It takes only several minutes.

2. Product Architecture and Basic Concepts

The product consists of the two main components:

Attachment Save for Exchange Agent. This program component integrates into the Microsoft Exchange Transport Service and keeps track of the organization's mail traffic for compliance with set message processing rules.

Administrator's Console is a Microsoft Management Console 3.0 snap-in. It is designed to product deployment, performance control and message processing rules setting.

The product architecture allows you to install it in various configurations. Both program components can be either deployed on one server or separately, on various computers.

3. System Requirements

3.1. Minimum System Requirements

Since the Attachment Save for Exchange Agent component integrates into the Microsoft Exchange Transport Service, system and hardware requirements for this component are determined by the used version of Microsoft Exchange Server.

The systems requirements for Administrator's Console are determined by Microsoft Management Console 3.0.

Attachment Save for Exchange supports 32- and 64-bit versions of the operating systems.

The following applications and components of the operating system must be installed before beginning the installation of the Administrator's Console:

- **Microsoft .NET Framework v2.0.** Included in the Microsoft Windows Server 2008, Windows Server 2008 R2, Windows 7 and Windows Vista. For other operating systems the platform can be downloaded from the Microsoft Download Center ([32-bit version](#) and [64-bit version](#)).
- **Microsoft Management Console v3.0.** Included in the Microsoft Windows Server 2003 R2, Windows Server 2008, Windows Server 2008 R2, Windows XP SP3, Windows Vista and Windows 7. For other operating systems the component can be downloaded from the [Microsoft knowledge base](#) .
- **Activated DCOM service** (Distributed Component Object Model). This service is activated by default in all versions of Microsoft Windows. Activation and deactivation procedure of this service can be found in [this](#) article.
- **Microsoft Internet Explorer v7.0 and higher.** Included in Microsoft Windows Server 2008, Windows Server 2008 R2, Windows Vista, Windows 7, Windows Small Business Server 2008 and Windows Essential Business Server 2008. For earlier versions it is available as part of update packages, and from the Microsoft [download center](#).

Installation guide for these components can be found at the Microsoft Web site.

3.2. Supported Types of Messages and Attachments

Attachment Save for Exchange supports all types of messages and attachments that are supported by your version of the Microsoft Exchange Server.

3.3. Supported Versions of the Microsoft Exchange Server

Attachment Save for Exchange is completely operable on the following versions of the Microsoft Exchange Server:

- Microsoft Exchange Server 2003;
- Microsoft Exchange Server 2007;
- Microsoft Exchange Server 2010;
- Microsoft Exchange Server 2013;
- Microsoft Exchange Server 2016.

4. Product Installation and Deployment

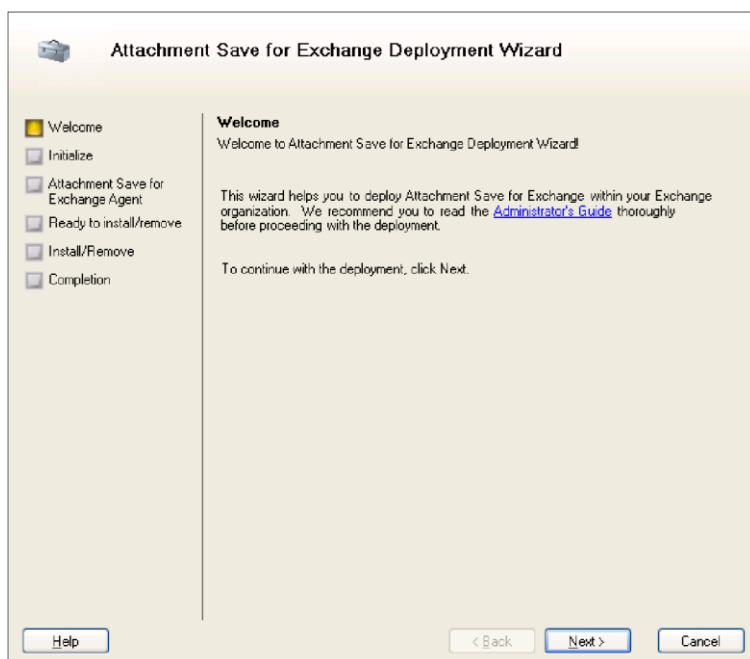
To install the product you will need local administrator privileges at the installation computer. Run the AttachmentSave.exe and follow the Wizard instructions. Please note that the installation file should be run only on those computers where the Administrator's Console component is required. The second component of the product will be installed remotely to the servers specified during the deployment process.

4.1. Deployment of Attachment Save for Exchange

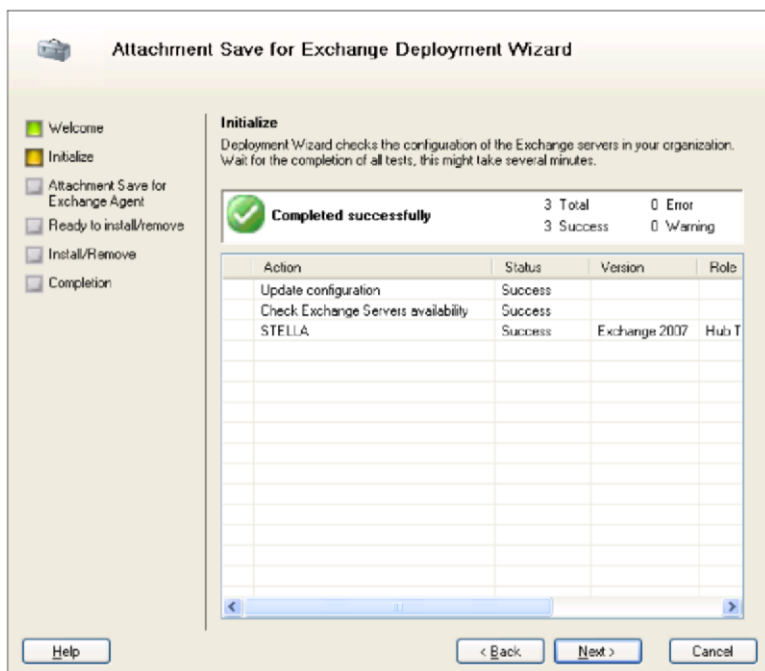
To deploy the product, the user launching Attachment Save for Exchange console should have the domain/enterprise administrator rights or Exchange Organization Administrator role (for Microsoft Exchange 2007/2010/2013/2016) and be a local administrator for computers where the product components will be installed.

Upon the product installation please launch the Attachment Save for Exchange console. Select Attachment Save for Exchange in the console tree and press „Deployment“ in the context menu or in the Actions pane.

The Deployment Wizard will be started to help you set up the Product in your organization's environment.



At step 2 the Deployment Wizard will look for the Exchange servers and check possibility of installing Attachment Save for Exchange Agent on them. This agent can be installed on the Back-end or Hub Transport servers only, other servers will not be shown in the list.



At step 3 of the Deployment Wizard you will be prompted to select the servers where Attachment Save for Exchange Agent should be deployed. Also here you may delete the previously installed copies of the Attachment Save for Exchange Agent or reinstall them.

Note! In some cases, remote installation of the agent may not be possible. For example, blocking the operation by a firewall. In this case, you can install the agent manually (see p 4.4).

1. Removing of Attachment Save for Exchange Agent component is performed through the Deployment Wizard. After that the remaining components of the product can be removed by through the Add or Remove Programs (Programs and Features) applet.

2. All components can be removed through the standard „Add or Remove Programs“ (Programs and Features) applet of the Control Panel separately on those computers where such components were installed.

After the product removal there are some components are remained:

- Active Directory container “CN=MAPILabAttachmentSave,CN=Global Settings,CN=[your Exchange organization name],CN=Microsoft Exchange,CN=Services,CN=Configuration,DC=[your domain name]”;
- log files of the Attachment Save for Exchange Agent in the “%ProgramFiles(x86)%\MAPILab Ltd\Attachment Save for Exchange Agent\Log” folder on the Exchange server;
- Log files of the Administrator’s Console in the “%ProgramFiles(x86)%\MAPILab Ltd\Attachment Save for Exchange\” folder on a computer where Administrator’s Console were installed;

Saving of these files allows updating the product with saving all of the settings through removal and further installation of a new version in the same folder. Remove these items manually if you don’t want to keep them.

4.4. Installation of the Agent on an Exchange 2003 failover cluster

The Product supports installation of the Agent on the failover cluster of Exchange 2003 servers. Installation of the Agent on the failover cluster is being performed with the help of Deployment Wizard. The Agent will be installed to the active cluster node only. To install the Agent to other nodes, please stop Cluster Service on the active node. This way, you will activate another node, where the Agent has not been installed yet. Then, perform deployment with the help of Deployment Wizard again.

Please pay your attention: If you using the failover cluster of the Exchange 2003 servers, folder permissions in the places to store messages and attached files should be granted for all computer accounts which are cluster nodes.

4.5. Manual Agent installation

If you deploy the product using the deployment wizard, you do not need to use the manual installation of the agent. This mode is used only in case of inability to automatically install this agent.

To install agent manually, copy the file AgentSetup.msi from the archive "%ProgramFiles(x86)%\MAPILab Ltd\Attachment Save for Exchange\

DeploymentPackage.zip on Transport server and run the command in command line:" AgentSetup.msi /Log agentSetup.log MANUALINSTALL = 1 SERVICETIMEOUT=15, where "agentSetup.log" - path to the installation log, SERVICETIMEOUT – delay for restart transport service (optional, default 4 min).

5. Initial Product Setup

After completion of the deployment as described in chapter 4 of this guide the message processing rules should be created. For this, select "New Rule..." in the "Rules" area in the Administrator's Console. After that Rule Wizard will be started to help you to create necessary message processing conditions.

5.1. Creation of Rules

Please note that the rules can be created only by those users who have domain/enterprise administrator privileges or Exchange Organization Administrator role (for Microsoft Exchange 2007/2010/2013/2016).

This is because the product configuration is stored in the AD container "CN=MAPILabAttachmentSave,CN=Global Settings,CN=[your Exchange organization name],CN=Microsoft Exchange,CN=Services,CN=Configuration,DC=[your domain name during the deployment. Message processing rules are also saved in this container, for which read and write permissions by default have members of "Domain Admins", "Enterprise Admins" and "Exchange Organization Administrators" groups only (if Microsoft Exchange Server 2007, 2010, 2013 or 2016 is installed in the organization). If the users without such rights need to be granted the rule creation rights, you must manually grant the "Read, Write, Create All Child Objects" and "Delete All Child Objects"

permissions for these users. This can be done by means of various editors of Active Directory such as ADSI Edit.

5.2. Priority of Rules

Attachment Save for Exchange enables to adjust the priority of created rules. Rule priority is determined by procedure of rule creation and specified in the Priority column of the Administrator's Console. The lesser number means a higher rule priority. The rule priority can always be changed by moving the rule up and down in the list with the help of the Move up and the Move down buttons in the context menu or in the Actions pane.

Please note that in case of installation of other agents from the MAPILab Disclaimers for Exchange or Print Agent for Exchange on one transport server, the rules of different agents may be applied to the same message. The order of application will be defined by the time of the agent installation. For example if the Attachment Save for Exchange Agent is installed first and then the MAPILab Disclaimers for Exchange Agent of MAPILab Disclaimers for Exchange product is installed, the rules for Attachment Save for Exchange will be applied first as the priority of this agent will be higher. This may be useful for example if you need to save original. At the same time the situation may be negative when the rules of Attachment Save for Exchange are applied prior to the spam filter (if such filter is installed on the same transport server as Attachment Save for Exchange Agent). The order of agents can be established in the following manner:

In Microsoft Exchange Server 2007, 2010, 2013 and 2016

Run Exchange Management Shell on the transport server and execute the command "Get-TransportAgent". The list of installed agents will be displayed in the execution results (see figure).

The priority of agents can be changed with the command:

"Set-TransportAgent -Identity "Attachment Save for Exchange Agent" -Priority 4", where "Attachment Save for Exchange Agent" is the agent name, "4" – priority. The "1" has the highest priority.

After changing the priority of agents the transport service must be restarted, e.g. with the "Restart-Service MExchangeTransport" command.

```

Machine: Stella | Scope: it-reports.local

[PS] C:\Documents and Settings\Administrator.IT-REPORTS>get-transportagent

Identity                                Enabled    Priority
-----                                -
Transport Rule Agent                   True       1
Journaling Agent                       True       2
AD RMS Prelicensing Agent              False     3
MAPILab Disclaimers for Exchange Agent True       4
Attachment Save for Exchange Agent     True       5

[PS] C:\Documents and Settings\Administrator.IT-REPORTS>Set-TransportAgent -Identity "Attachment Save for Exchange Agent" -Priority 4
WARNING: The following service restart is required for the change(s) to take effect : MExchangeTransport
[PS] C:\Documents and Settings\Administrator.IT-REPORTS>get-transportagent

Identity                                Enabled    Priority
-----                                -
Transport Rule Agent                   True       1
Journaling Agent                       True       2
AD RMS Prelicensing Agent              False     3
Attachment Save for Exchange Agent     True       4
MAPILab Disclaimers for Exchange Agent True       5

[PS] C:\Documents and Settings\Administrator.IT-REPORTS>

```

In Microsoft Exchange Server 2003

To change the priority of agents (sinks) in Microsoft Exchange Server 2003 you need to download the script SMTPReg.Vbs <http://msdn.microsoft.com/enus/library/ms528023%28EXCHG.10%29.aspx> .

Copy the script to the transport server, open a command prompt and run:

```
cscript "C:\SMTPReg.vbs" /enum > "C:\sinks.txt" where,
```

"C:\SMTPReg.vbs" - name of script file;

"C:\sinks.txt" - name of output file which will displays information about available sinks.

Open the file sink.txt and find the options you're interested agent.

```

-----
| Binding |
-----
Event: SMTP Transport OnPostCategorize
      ID: {D0D4DE8E-5FAA-4442-96DB-63D8909AC118}
      Name: MAPILab Disclaimers for Exchange Agent
      sinkClass: MAPILab.ExchangeUtils.DisclaimerTool.Smtpsink.Smtpsink
      Enabled: True
SourceProperties: {
                  priority = 400
                  }
SinkProperties   {
                  VSI = 1|
                  }

```

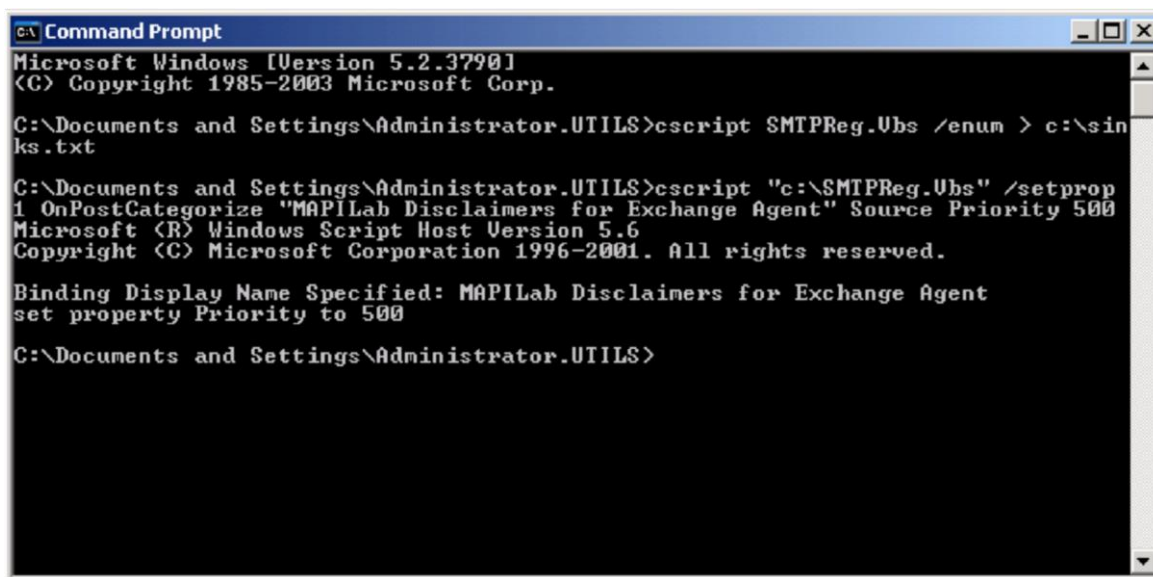
To change the priority of the agent used as an example the following command:

`cscript "C:\SMTPReg.vbs" /setprop 1 OnPostCategorize "MAPILab Disclaimers for Exchange Agent" Source Priority 500` where,

1 – number of virtual SMTP server (if you have several virtual servers, the agent will be installed on each of them);

"MAPILab Disclaimers for Exchange Agent" – name of the agent (sink);

500 – priority to be given (the value can range from 0 to 32767, with 0 being the highest priority and 32767 the lowest priority.)



```
CA Command Prompt
Microsoft Windows [Version 5.2.3790]
(C) Copyright 1985-2003 Microsoft Corp.

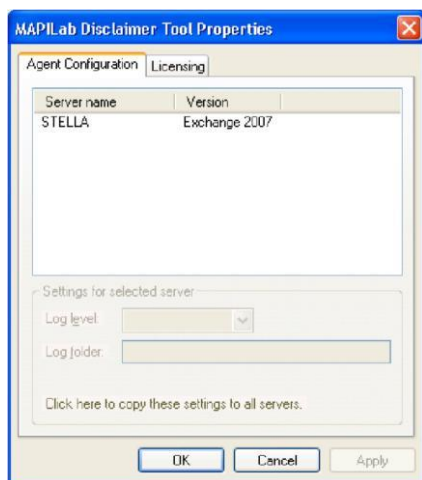
C:\Documents and Settings\Administrator\UTILS>cscript SMTPReg.Ubs /enum > c:\sin
ks.txt

C:\Documents and Settings\Administrator\UTILS>cscript "c:\SMTPReg.Ubs" /setprop
1 OnPostCategorize "MAPILab Disclaimers for Exchange Agent" Source Priority 500
Microsoft (R) Windows Script Host Version 5.6
Copyright (C) Microsoft Corporation 1996-2001. All rights reserved.

Binding Display Name Specified: MAPILab Disclaimers for Exchange Agent
set property Priority to 500

C:\Documents and Settings\Administrator\UTILS>
```

6. General Product Settings



The product settings are adjusted in the Properties dialog that is opened from the Actions pane or context menu in the Administrator's Console.

The product log files settings are made in the Agent Configuration tab. These settings are made separately for each server the Attachment Save for Exchange Agent is installed on:

- Log level – level of record details in the log. The default setting– Errors – allows to record only message processing errors. Change this setting to Full if the most detailed message processing information needs to be saved in the log (can be used for error diagnostics), or None, if the log is not required.
- Log folder – folder to save Attachment Save for Exchange Agent logs. Default setting: "%ProgramFiles(x86)%\MAPILab Ltd\Attachment Save for Exchange Agent\Logs\"

Product licensing keys are specified in the Licensing tab. For more details see [chapter 7](#).

Section "Monitoring". Agent performance is displayed in this Section. Here you may view the information about the number of messages processed by agent and processing time in the form of diagrams.

Section "Rules". Message processing rules can be viewed, edited and created in this Section. When creating a new rule or editing the existing one the Rule Setting Wizard will be started to help you create or edit the message processing rule.

7. Licensing

Licensing the product is made by purchase of license keys, appropriate amount of Exchange servers, on which product Agent is installed. These license keys are entered on the Licensing tab in the Properties dialog that is opened from the Actions pane or context menu in the Administrator's Console. Please note, after expiring trial period, the Agent will stop the processing of messages until you enter the license keys.

8. Diagnostics of malfunctions

After completing the product deployment and creating the initial message processing rules, it is recommended to check it. For this purpose send a text message that complies with the rules set.

Conclusion

More details about the Product and its features as well as latest updates can be found at the MAPILab Web site <http://www.mapilab.com>.